



San Juan County Community-Based LTC Network

Update to San Juan County
Board of Health

June 16, 2021



Discussion Agenda

- Federal Grant Overview
- Network Members – Former and Current
- Work Plan and Deliverables
- Public-Private Collaboration
- Next Steps

Health Resources and Services Administration (HRSA)

HRSA is a federal agency that focuses on improving access to health care services for people who are uninsured, isolated or medically vulnerable.

The Rural Network Planning Grant is designed to promote the development of integrated health care networks in order to:

- ✓ ***achieve efficiencies***
- ✓ ***expand access to, coordinate & improve the quality of basic health care services***
- ✓ ***strengthen the rural health care system***

SJC Network was awarded a one-year \$100,000 Network Planning Grant from HRSA in September 2020.

This grant is separate and distinct from the HRSA Care Coordination 3-year grant awarded in August 2020.

SJC LTC Network Members - Original

These four entities who submitted the grant application were:

- San Juan County Public Hospital District No. 1 (San Juan)
- San Juan County Public Hospital District No. 2 (Lopez)
- Inter Island Healthcare Foundation
- PeaceHealth/PIMC

Expanding the Core Group Since January 2021

All 3 Public Hospital
Districts

EMS Agencies

SJI Community
Foundation

County/Dept of
Health & Community
Services

EDC/Workforce
Training
Organizations

NW Regional
Council/Whatcom
Council on
Aging/Skagit College

Regional/Local
Health Care
Providers

Local Nonprofits/Sr.
Service Council of
SJC

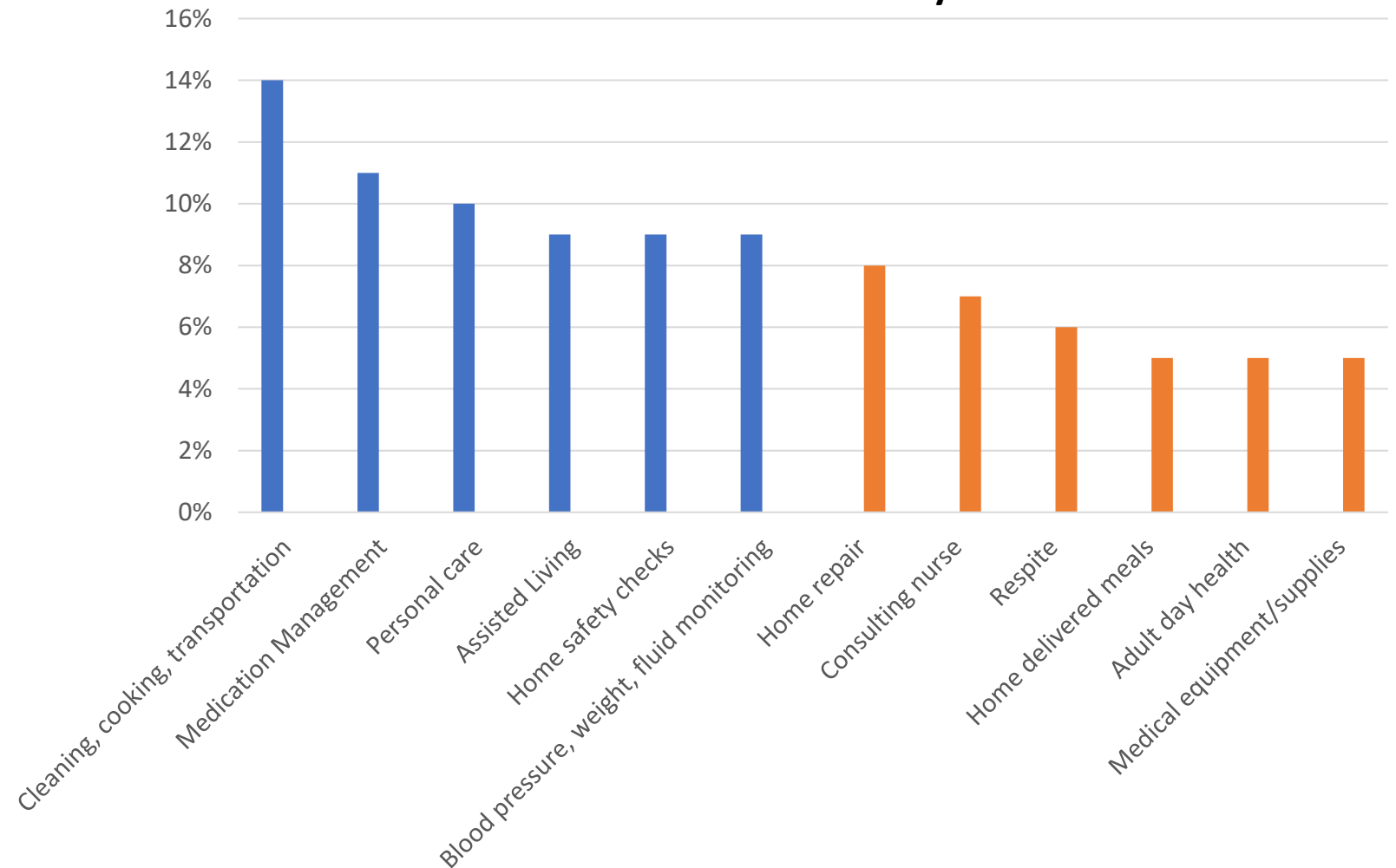
SJC LTC Network Planning Grant Work Plan

- Establish the **purpose and role** of a formal Network related to services for the vulnerable/elderly population.
- Determine the **governance and organizational structure** i.e.: (Interlocal or 501 (c) (3)) that will best support the development of the infrastructure necessary to meet project goals and objectives.
- Evaluate the **current community-based long-term care delivery system** to identify service gaps, resources needed, and any existing capacity that can be redeployed.
- Identify and evaluate **innovative and evidence-based delivery models** to support identified gaps and resource needs.
- Assess the **financial feasibility** of and reimbursement/funding mechanisms to support the defined care delivery model.
- Develop a **strategic plan** incorporating priorities, goals and objectives of the Network and address the planned implementation of new delivery and payment models.

2019 Community LTC Survey

Q #16: What additional services do you/they need to remain at home or in the community?

- About 13% of all respondents indicated that additional services were needed to remain at home, and 46% of those with 3+ reported needs.
- Other services mentioned as needed included urgent care and memory help (n's were very small).



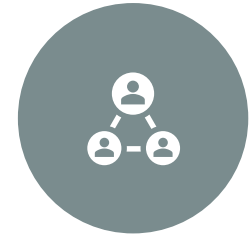
“Buckets”
of need
identified
to date
that will
influence
network
design



WORKFORCE
DEVELOPMENT



DIRECT SERVICES:
FACILITIES
DEVELOPMENT



DIRECT SERVICES:
COMMUNITY-BASED



INNOVATIONS - HOME
TECHNOLOGIES, ETC.



HOUSING

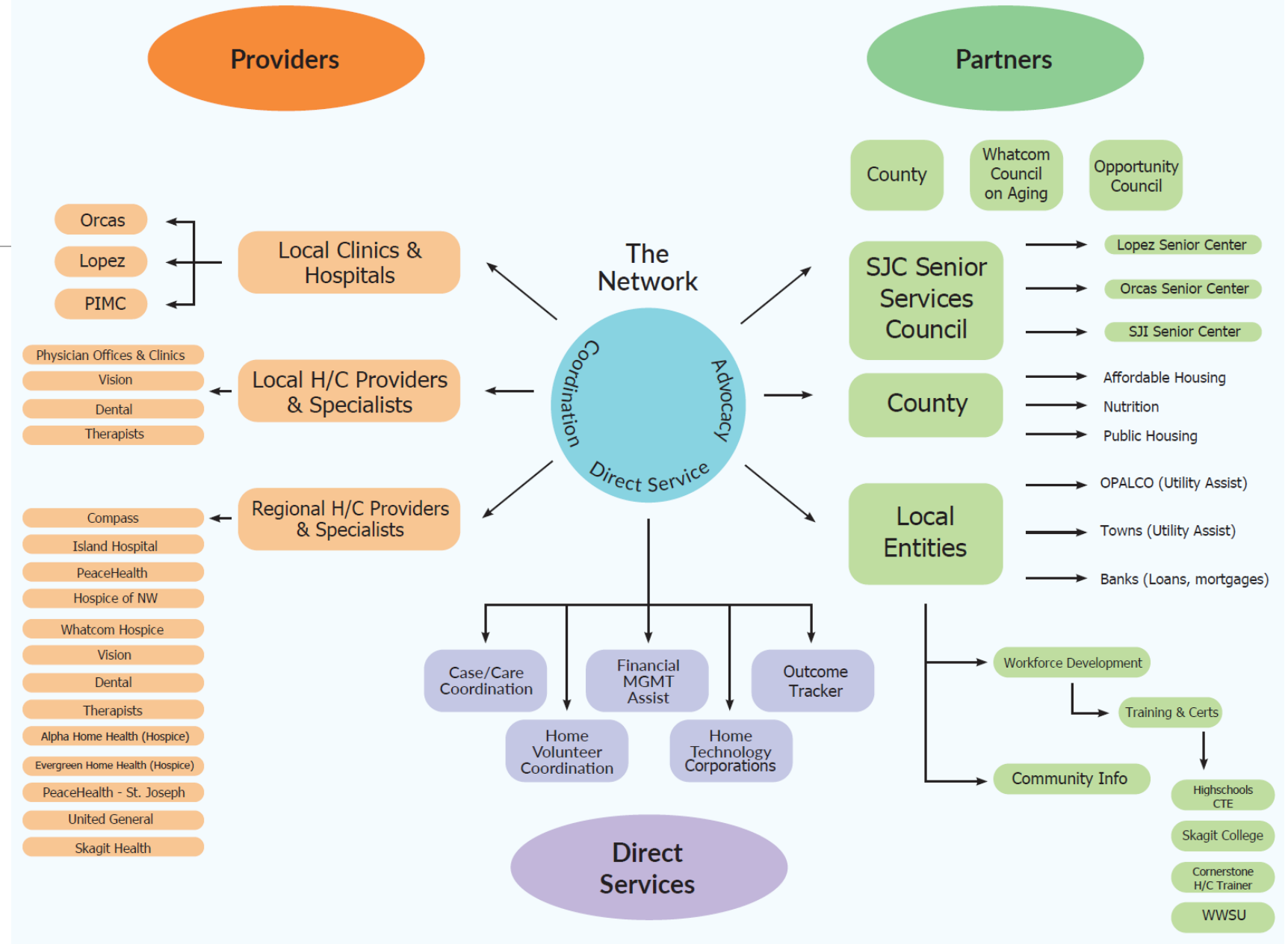
Network Deliverables To-date

- Network Statement
 - ✓ **Concise and compelling story of the Network**
- External Environmental Scan
 - ✓ **Assessment of Opportunities and Threats on local/statewide/national level**
- Asset Mapping
 - ✓ **Local and Regional resources & supports**
- **Network Organizational Assessment – Why We Are Here**
 - ✓ **Beginning work to determine possible structure and role of the Network**

Network Structure - Interlocal Agreement

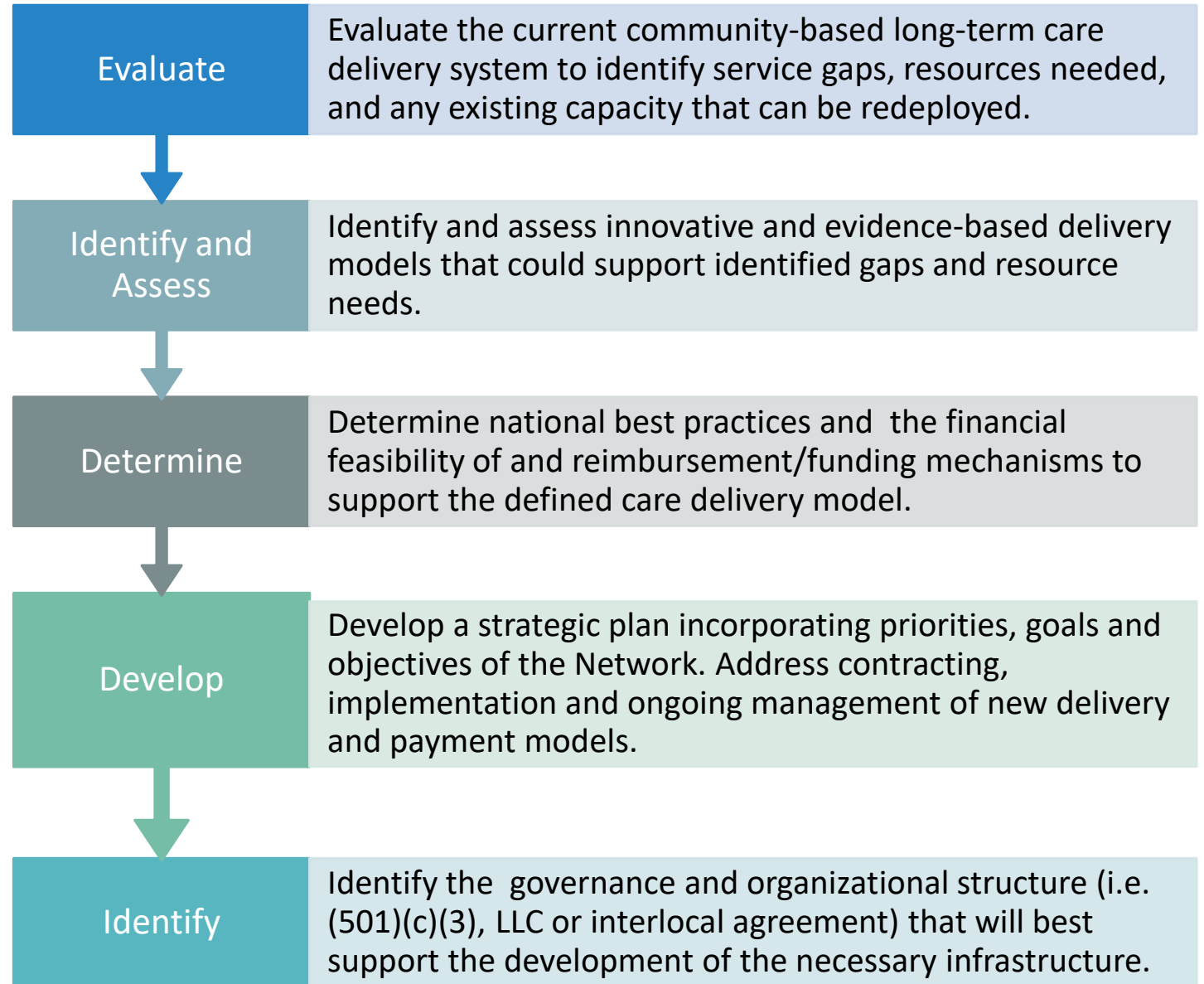
- Allows for collaboration Across Public Entities
 - ✓ **Chapter 39.34 RCW authorizes public agencies to contract with other public agencies**
 - ✓ **Enables cooperation among agencies to perform actives and deliver public services**
 - ✓ **Also allows the creation of non-profits to carry out and deliver public services**
- Value of an ILA
 - ✓ **Reduce duplication, offer economies of scale, and improve governmental efficiency**
 - ✓ **Can be established quickly to enable to ongoing work**
- Areas Yet to be Defined in Agreement
 - ✓ **Purpose of the Network – explore/discern and recommend a Long-Term Care solution based on the Strategic Plan that comes out of the Planning Grant**
 - ✓ **Roles & Responsibilities of Network Members; including voting rights and terms**
 - ✓ **Funding**

Considerations in determining the functions of a formal Network.



Work to be done in the last quarter of the grant (July-Sept).

Important to note this is a planning grant, that *prepares us* for implementation, but *does not* include implementation.



NEXT STEPS (June through August)

Finalize draft Interlocal Agreement & Bylaws (June)

- ✓ Work Group to include representatives from PHDs and County

Core Network Group review (June)

- ✓ Finalize Interlocal Agreement & Bylaws for formal Network
- ✓ Identify Network role which will inform services and operational budget
- ✓ Determine function of non-profits in direct service role

Return to PHDs and BOH to present formal Network model

- ✓ Provide feedback on proposed Network model (July)
- ✓ Take action on ask to join the formal Network (August)

Questions

Thank you!

